

interstuhl

AirPad





Second and third generation managing directors: Helmut, Werner and Joachim Link (left to right)

Interstuhl

The idea of a Swabian businessman and developer is embarking on an international journey. It's all about attractive and healthy seating, whether we use it to work, think, discuss, argue or relax.

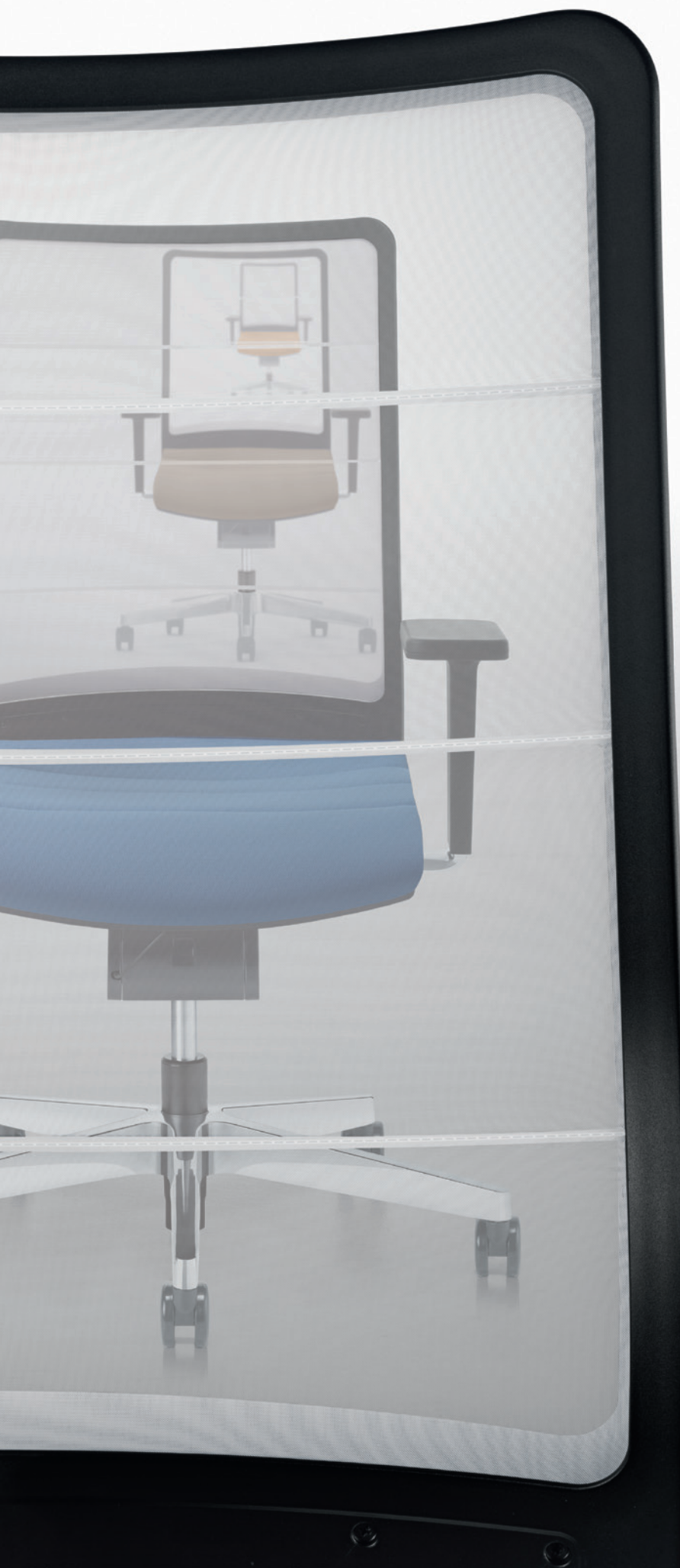
It's all about a chair that actively supports us at what we are doing.

Interstuhl innovations are conceived, tested and developed in an interesting mix of think-tank and expert laboratory. That is what makes us so unique. Simply stated by Werner Link, the company's owner and Managing Director: "We understand more about sitting". An honest statement that has its origins back in 1961 when the assignment was to create relaxing seating for the workers of a textile factory. The focus ever since has been on expertise and

a genuine interest in our products and the people who use them. We remain true to the spirit of our brand by collaborating with leading institutes on the scientific development of our products. This has resulted in a collection that is unparalleled in its breadth and depth. He who understands more about sitting, has studied it in detail. Interstuhl is such a company and will remain so: a world away from corporate affiliations and concerns about globalization. Over 600 employees craft exclusive German goods and they do so in Germany.

Anyone who understands more about sitting should rise up. Rise above the tired old clichés about quality and materials. Interstuhl is what it is, and what it is is very good.





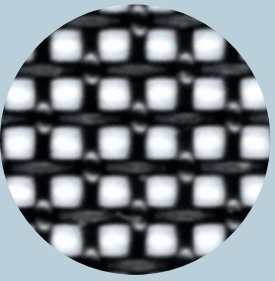
**The synthesis
of lightness:
AirPad.**

Optimal sitting experience,
microclimate management
and high transparency
through innovative
membrane technology
and Body-Float synchronous
mechanism.



3C42

The synthesis of lightness: Two innovations.



A new sense of lightness. The new, transparent membrane constitutes the evolution of the mesh back. It allows AirPad to float lightly in space and enhances modern, reductionist architecture. The body is kept at an ideal temperature through a high degree of moisture exchange, which prevents the build-up of heat. The membrane ensures excellent freedom of movement and provides support through fine, flexible AirPads. The Body-Float synchro-mechanism presents an amazing, unique body float sitting experience. Taking a seat in AirPad means gently falling back into an automatically adjusted, ideally balanced sitting position. To feel one with the chair and the environment, to get down to work and remain fresh. Wouldn't it be nice to fill the day with so much lightness? Nothing easier than that.

AirPad membrane is

- 1. Floating feeling**
- 2. Optimal body climate and freedom of movement**
- 3. Transparent aesthetics**
- 4. Light and easy to care for**

AirPad is available with a white or black membrane and the upholstery, including leather upholstery, comes in many different colours and varieties, and there are two armrests to choose from.



3C42

Office swivel chair,
Body-Float synchronous mechanism,
weight regulation,
optional ring-shaped armrests



3C42

Office swivel chair,
Body-Float synchronous mechanism,
weight regulation,
optional 4D T-shaped armrest



AirPad is available as a swivel chair and as a visitor's chair. Impressive: the transparent appearance of all our models



3C72

Office swivel chair,
Body-Float synchronous mechanism,
weight regulation, head support,
optional 4D T-shaped armrest



5C35

Cantilever frame,
Arm pad



The front cantilever seating edge:
new, striking appearance



The front cantilever seat edge makes it easy to find a comfortable setting of the seat inclination. The innovative suspension on the rear seating area means the seating height no longer has to be manually adjusted, just like the height of the lumbar support when the seat inclination is adjusted.



The new Body-Float synchronous mechanism allows the body to glide backwards and downwards in a gentle flowing movement. This generates a floating and completely relaxed feeling while seated. The mechanism covers a wide weight spectrum of 45 – 140 kg.



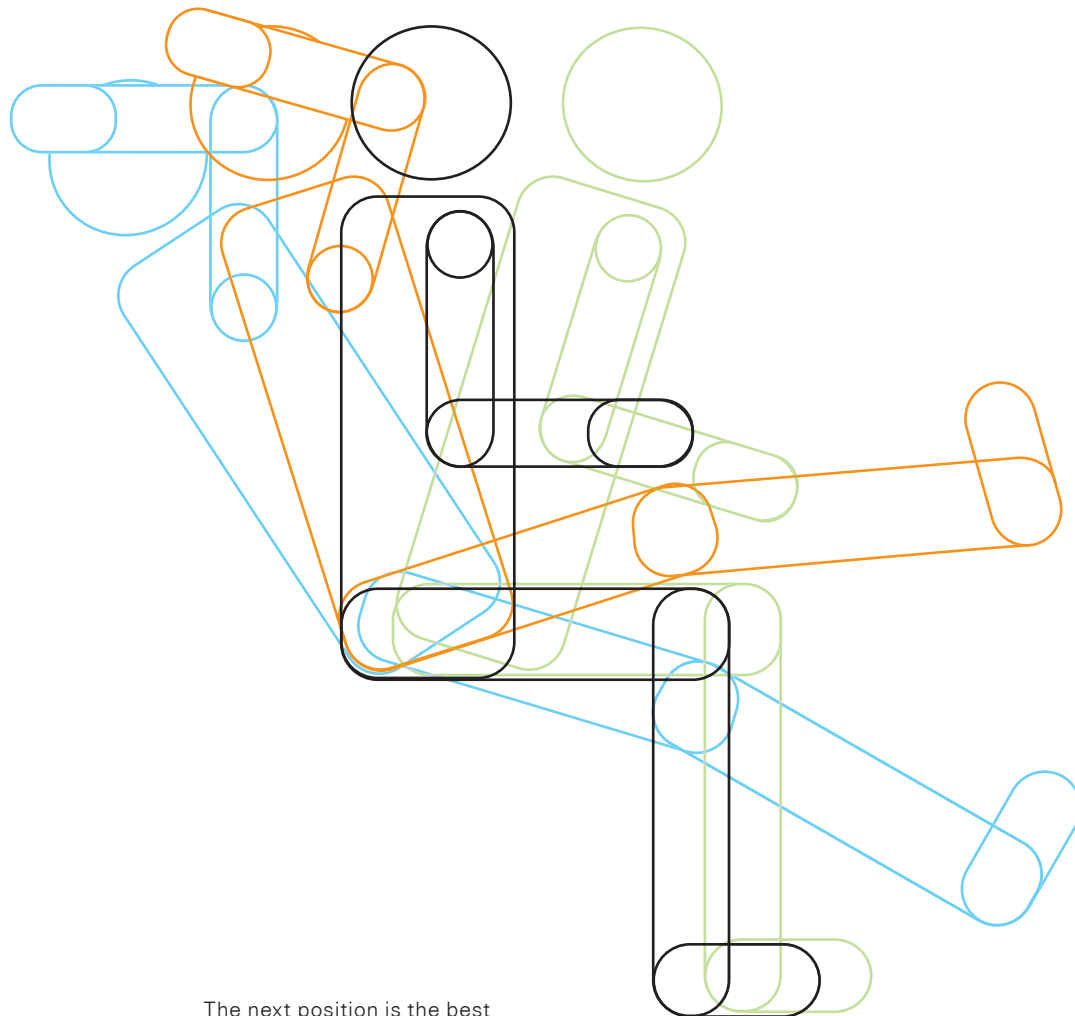
The backrest is segmented by means of fine bars. These are narrow yet highly stable. The membrane is stretched between the bars and generates a tremendously high level of freedom of movement and support for the back.



All operational controls are adjusted intuitively. The hand wheel provides fine adjustment of the dual Bodyfloat mechanism return force.



The Astiv active seat depth adjustment extends the seating area and hence the support area for the upper thighs. The back remains supported on the backrest, providing an optimum seating position.



The next position is the best

From the seating specialists

Fact: from an anatomical point of view ergonomics means movement because movement is a critical part of office health. It is a law of nature that effective work processes are one of the most important sources of value-added in the company. Back problems are the greatest causes of absenteeism. A good chair will not heal your back but it is good preven-

tive medicine and eases the pain for those who already suffer. What does an Interstuhl chair do? The patient therapist offers support in each posture. It generates a feeling of well-being in all positions and brings measurable relief.

Naturally, the courage to follow our philosophy of dynamic sitting has meant a break with all the old rules: majestic, immaculate and bolt upright vs. the new

philosophy of doing it with gusto, reclining, lounging, looking out the window, concentrating.

"You can sit however you want. Just sit on the right chair." Each new product development with leading research institutes reconfirms this and it is substantiated by scientific input. The result: Interstuhl chairs accommodate every posture so ergonomically that maximum support is ensured.

- 1** Body-Float synchronous mechanism



Through the gentle floating movement of the seating area and backrest, the body is supported brilliantly in any position. The mechanism covers a wide weight spectrum of 45 – 140 Kg
- 2** Sprung column



This ensures that the spine, which is very sensitive to vertical jolts, is not subjected to excessive loads when sitting down, even at the lowest seat height.
- 3** Weight adjustment



The individually adjustable counter-pressure of the backrest permits correct sitting for both light and heavy users.
- 4** Backrest height adjustment



The support range for the lumbar spine can be ideally adjusted to the height of the user.
- 5** Seat inclination adjustment



Multiple adjustment of the seat in a forwards direction stops the pelvis from tilting back. This relieves the spine and avoids a poor posture.
- 6** Seat depth adjustment astiv



Regulates the distance between the backrest and front edge of the seat, thus providing optimum support for the upper thighs; even for taller users. When adjusting the astiv setting, the back remains in the same position.
- 7** Adjustable lumbar support



The horizontally adjustable lumbar support adapts to the individual curve of the lumbar spine; this reduces the muscle strain.
- 8** Headrest



The neck and shoulder muscles are relieved by the headrest when you lean back.



Based in the Swabian Alb region in Germany, each day we gaze at a natural, picturesque landscape that is hardly touched by infrastructure. Therefore, care of the environment is a particularly poignant topic and the driving force for our efforts which, thanks to our reliable partners in the recycling industry, result in measurable environmental and ecological success and almost continuous recycling processes.

AirPad Environment Product Information

The sensible and responsible use of resources and management of our ecosystem over the long term has captured our imagination for some time now. As well as our corporate requirements in terms of quality and long product life, it is the flexibility and creativity of our workforce that sets milestones. In the creation of a product the complex requirements of technical and ecological

innovation are continuously developing on the basis of 8 interstuhl construction principles aimed at supporting people and the environment in the best possible way.

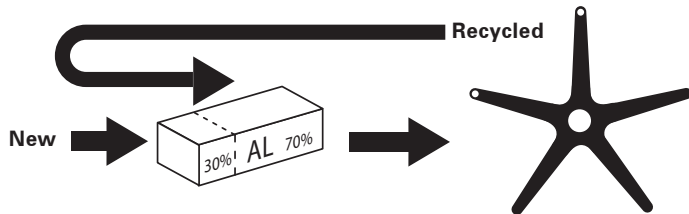
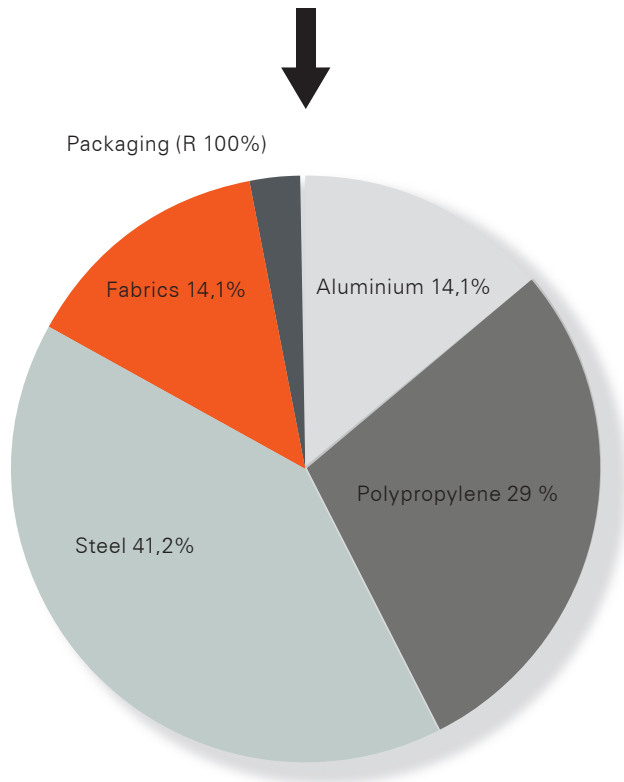
- 1993: The company was the first in the sector to be certified according to DIN EN ISO 9001.
- 1994: The Federal State of Baden-Württemberg was hon-

oured for its outstanding performance in the promotion of corporate environmental protection.

- 1996: EMAS registration
- 2006: LGA (Landesgesundheitsamt (State Health Authorities)) premium product accolade
- 2009: awarded the blauen Engel (Blue Angel) emblem

The 8 interstuhl construction principles

1. Easy assembly
2. Least possible use of composite elements
3. Optimal material utilization
4. Few different materials
5. Only recyclable material
6. Use of recycled materials
7. Natural materials where possible
8. Environmentally-friendly packaging



Recycling begins with AirPad well before production: as far as possible materials are used that have a high recycled content. Literally, the base of your current swivel chair is made out of the aluminium of the base of your disassembled old swivel chair and can be processed in the future to form the base of your new swivel chair.



Quality produced for the environment



Tested for contaminants



Certified environmental management



The Blue Angel



Membrane colour
white 8140 8144



Membrane colour
black 8140 8140

Rest height in cm (approx.)

Polypropylene colour black

Base in black polypropylene

Base in black aluminium / brilliant silver / polished / chrome

Frame in black steel / brilliant silver / chrome

Bodyfloat synchronous mechanism

Weight adjustment

Mechanical sprung column

Backrest height adjustment

Seat depth adjustment

Adjustable seat inclination

Adjustable lumbar support

Head support

Loop armrests with optional leather cover

2D T-shaped armrests, width and height adjustable

4D T-shaped armrests, width, height and depth adjustable, rotational

Fixed armrests with optional leather cover

Hard / soft double castors

Gliders

Felt gliders

• Series • Option - not available

Office swivel chairs / swivel chairs

Visitor's chairs / conference chairs



3C42

3C72

5C30

5C35

Swivel chair,
Body-Float synchro-
nous mechanism,
weight adjustment

Swivel chair,
Body-Float synchro-
nous mechanism,
weight adjustment,
headrest

Cantilever chair,
arm pad support
stackable

Cantilever chair,
arm pad support

60

60

51

51

•
•
◦ / ◦ / ◦ / ◦
-

•
•
◦ / ◦ / ◦ / ◦
-

•
-
-
• / ◦ / ◦

•
-
-
• / ◦ / ◦

•
•
•
•
◦
◦
◦
-

•
•
•
•
◦
◦
◦
•

-
-
-
-
-
-
-
-

-
-
-
-
-
-
-
-

◦
◦
◦
-

◦
◦
◦
-

-
-
-
•

-
-
-
•

• / ◦
◦
-

• / ◦
◦
-

-
-
◦

-
-
◦

High-level transparency in every respect predestines AirPAD for high-quality architecture.



3C42

Premium products

Often the word innovation is more of an obstacle than a useful coordinate – all too often inflated claims and abuse of the term for purely promotional reasons obscure the distinction between real innovation and the purely derivative. This is why we are particularly pleased that customers can now not only experience the quality of our products, they can see it too: we are the first manufacturer to be granted the right to label our products with the official “Premium Product” seal, awarded by the LGA testing company and TÜV Rheinland Group certification body. In addition, we have won yet another accolade: the best “Quality Office”. Put simply, every Interstuhl product provides a premium sitting environment and all owners of Interstuhl chairs can rest assured that they have chosen the best possible product. This has a positive impact on the person as a whole and their entire working day. Knowing this, we are more than happy to issue a 5-year guarantee. We share the praise for our innovative seating solutions with the research institutes that are always ready to support our developments and think we’ll keep doing things this way.

Quality Office

Awarded by the Verband Büro-, Sitz- und Objektmöbel e.V., the German Standards Institute (DIN), the Verwaltungs- und Berufsgenossenschaft, INQA Büro, Initiative neue Qualität der Büroarbeit, and the Federal Institute for Occupational Safety and Health.



Produkt-Design: Andreas Krob, Joachim Brüske © interstuhl.

Andreas Krob is an industrial designer. B4K was founded with his wife Uta Krob in 2001. The office stands for sensitive design of demanding and innovative tasks from the design and architecture fields. The furniture speaks an individual language of form and each single piece is unique in its character.

The product design for AirPad was realised in cooperation with Joachim Brüske. Joachim Brüske took charge of the technical management.



3 year full warranty,
5 year long-term
warranty



Quality produced
for the environ-
ment



Ergonomically
tested



Tested for
contaminants



Tested
safety



Deutsche Güte-
gemeinschaft
Möbel e.V.



Quality
Office



Premium
product



Certified
environmental
management



The
Blue Angel